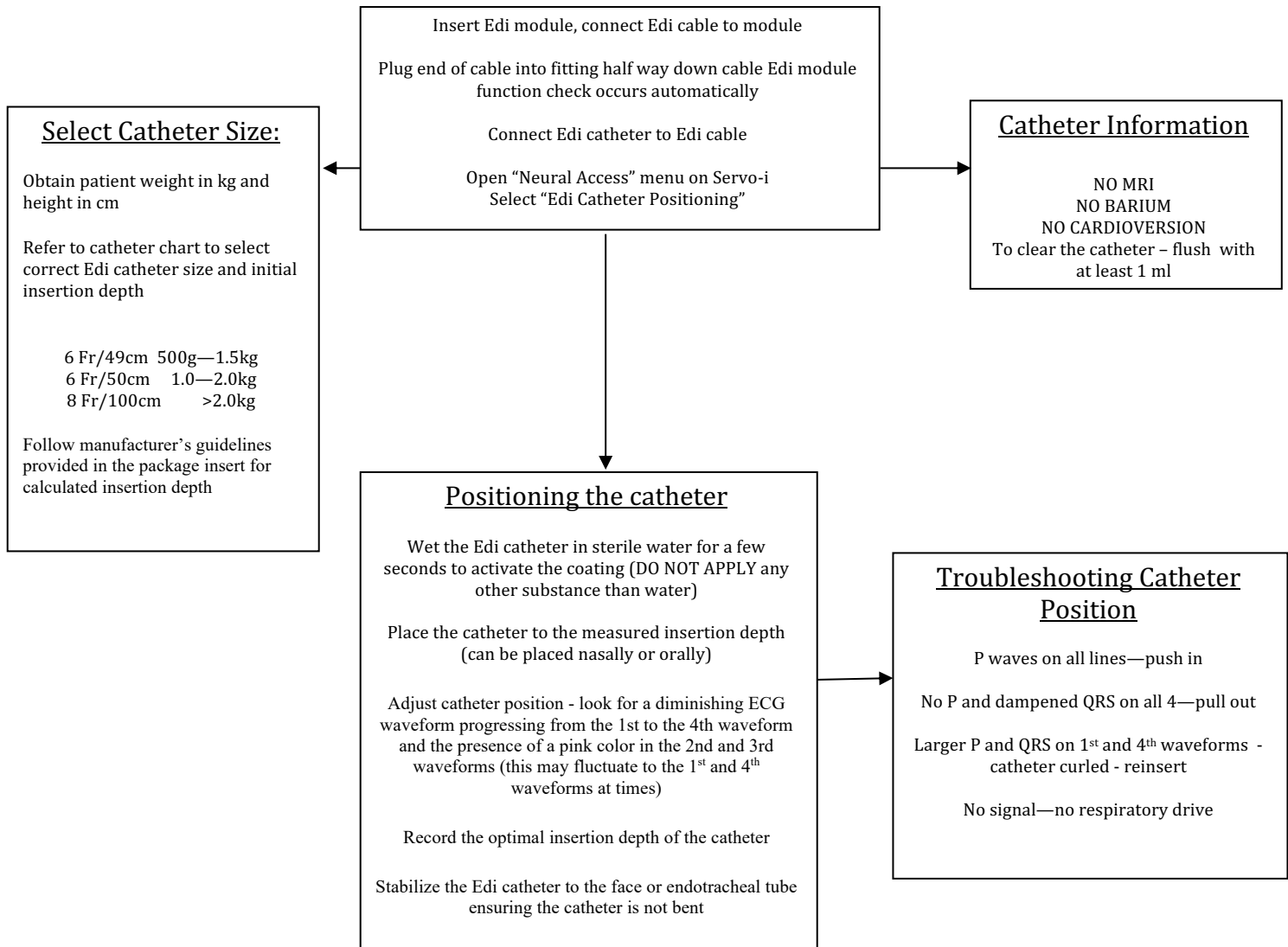


Neonatal NAVA Management Protocol

CATHETER PLACEMENT AND POSITIONING



Invasive and non-invasive NAVA – Set-Up for Servo U/N

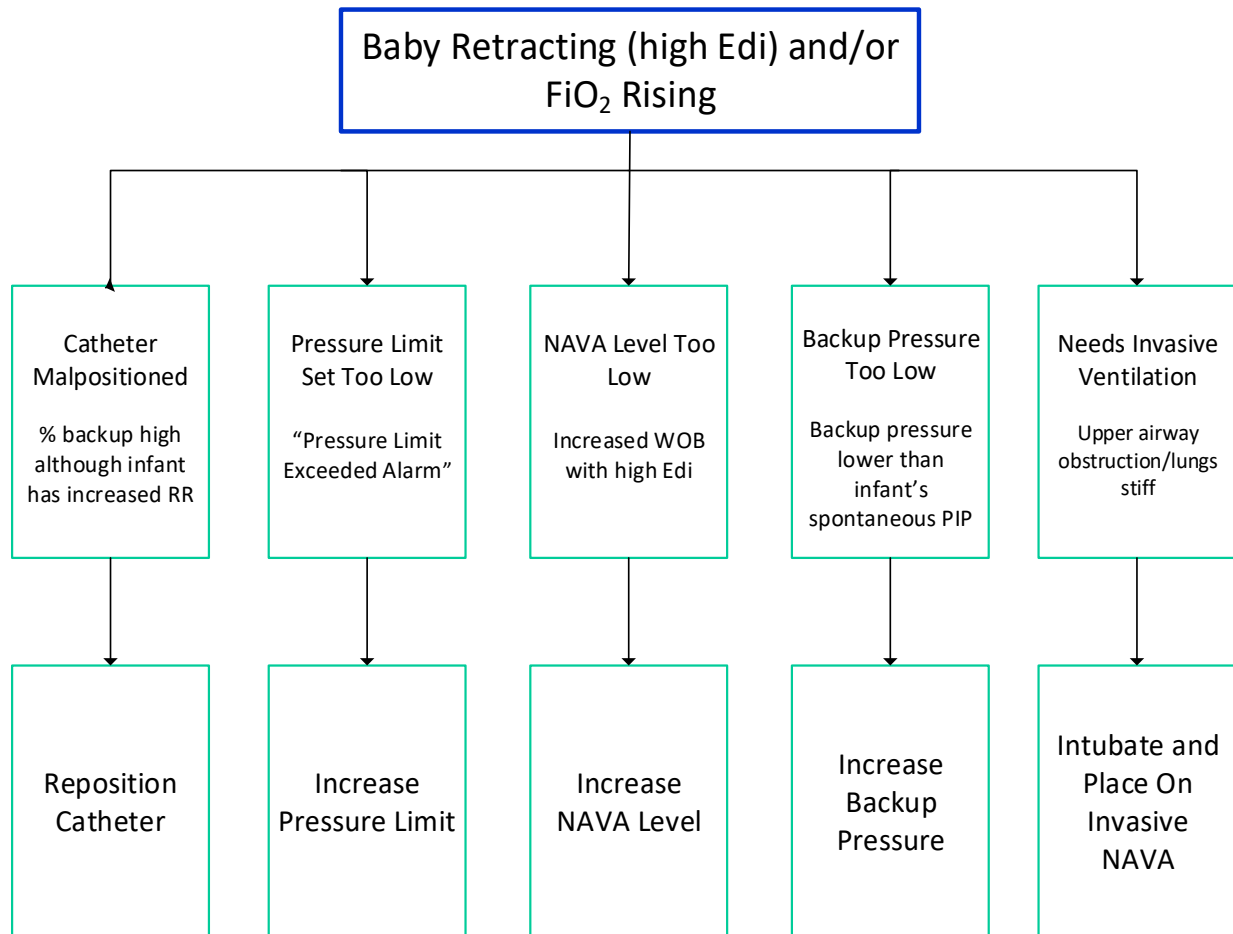
Ventilator Settings:

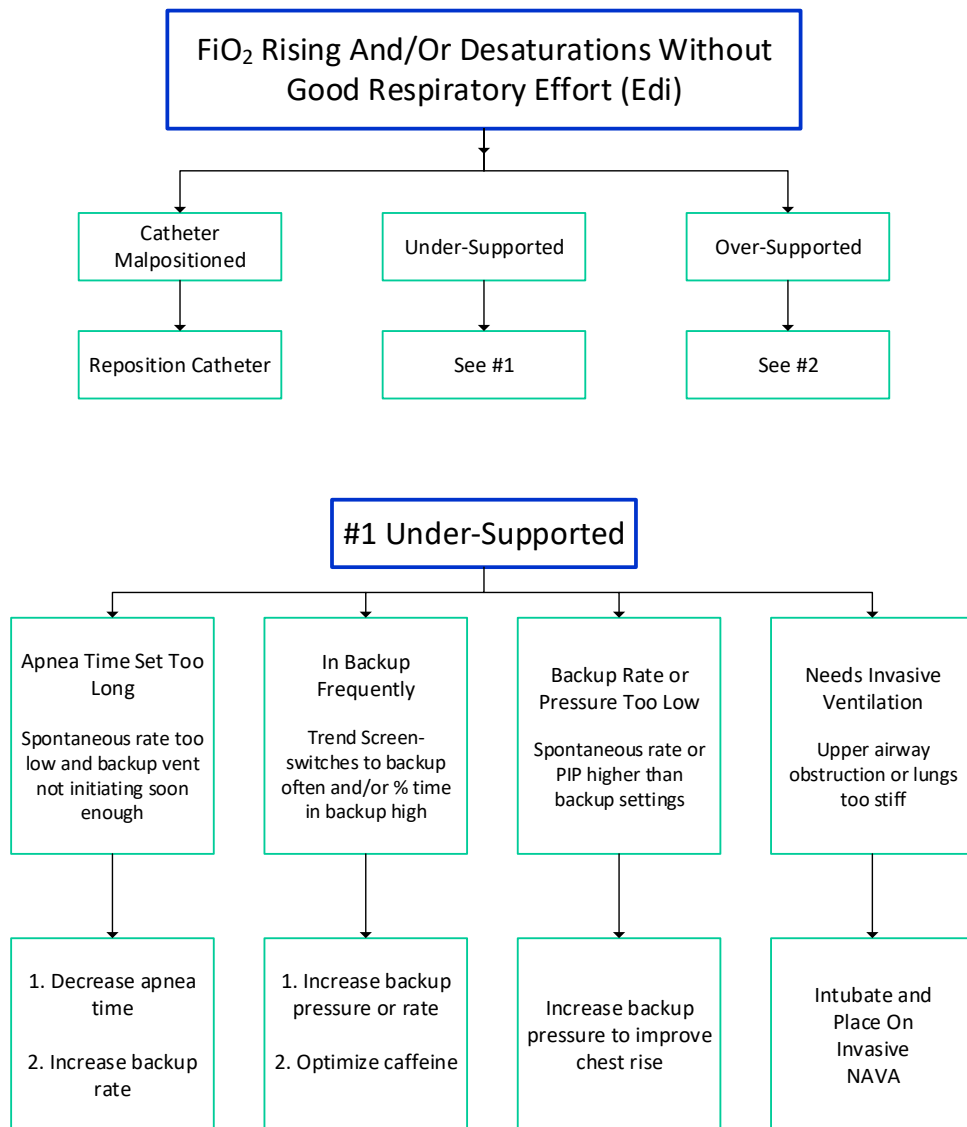
NAVA Level	2 cmH ₂ O/mcV
PEEP	5-6 cmH ₂ O
Trigg Edi	0.5 mcV
PS Trigger Flow	5 cmH ₂ O pressure flow
Backup PC above PEEP	PIP to move chest and ventilate if neonate totally apneic – typically 18-22cmH ₂ O
Backup Resp Rate	40-60 breaths/min
Backup IT	0.3-0.4 sec
Apnea Time	2 sec

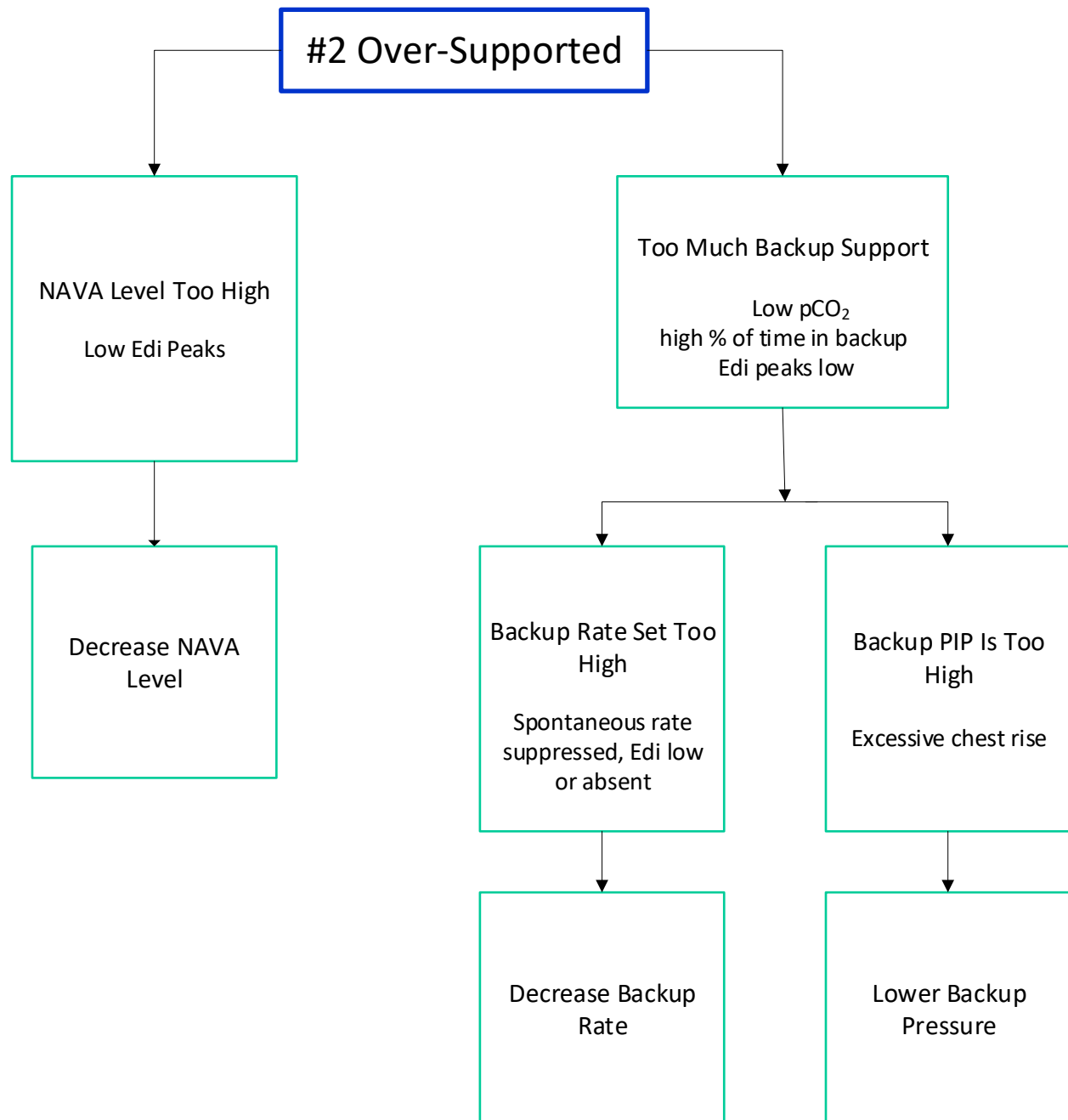
Alarm Settings:

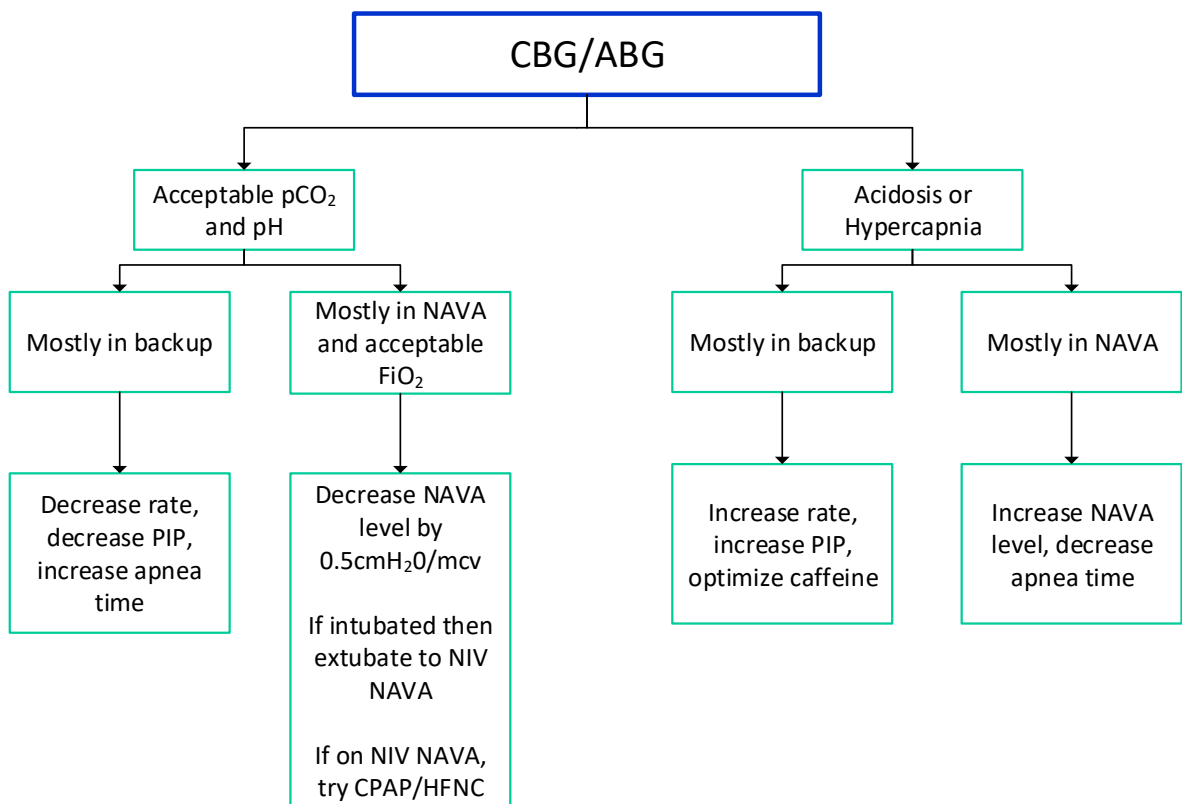
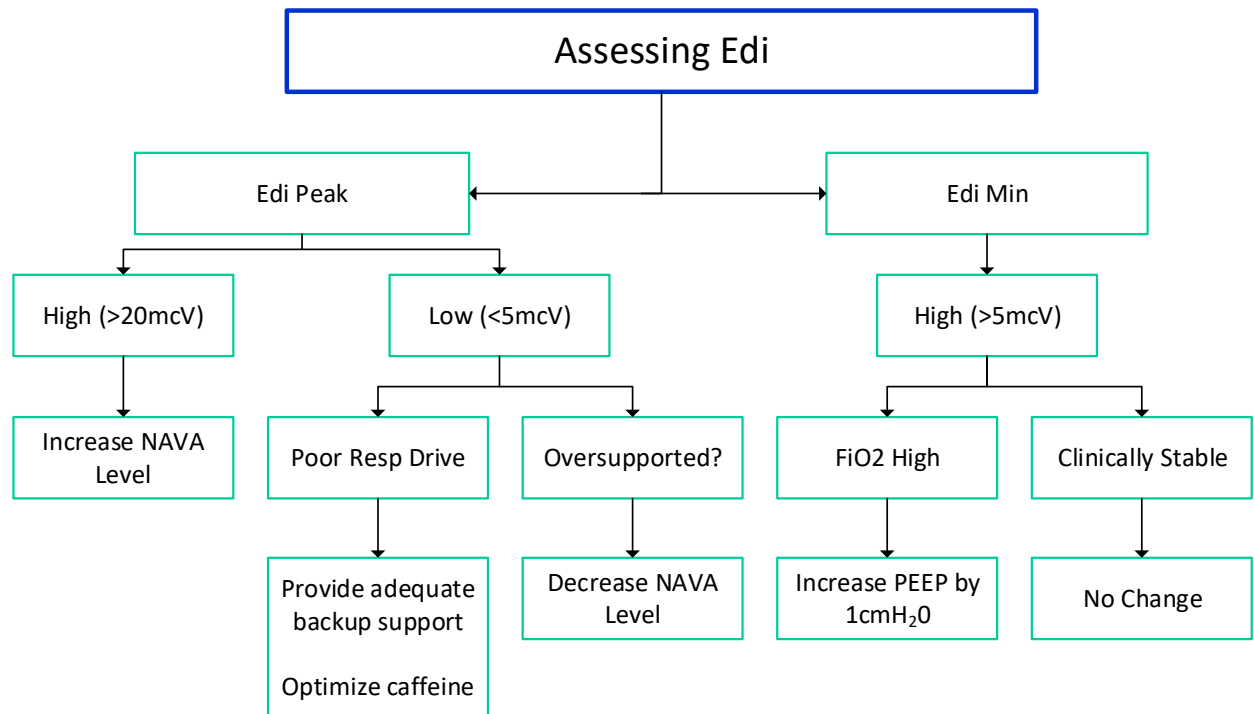
Pressure (PIP pops off at 5 below pressure)	35-40cmH ₂ O
Minute Volume	Lower: 0.01 l/min; Upper: 5.0 l/min
Respiratory Rate	Lower: 15 b/min; Upper: 100 b/min
End Expiratory Pressure	Lower: 2 cmH ₂ O; Upper: 10 cmH ₂ O
Sound Level	Per NICU policy
Edi Activity Low	off
NAVA Apnea	off

Troubleshooting Guide









The following videos may be viewed for more detailed instructions of implementation and maintenance of NAVA and NIV-NAVA

1. Inserting Catheter: https://youtu.be/B-nJyUZF_UQ



2. EDI Trigger: <https://www.youtube.com/watch?v=PXQvBAG-MVc>



3. Changes in NAVA Level: <https://youtu.be/Z8GndYaMIY>



4. PIP Alarm: https://youtu.be/Pxe_4pdpwCs

